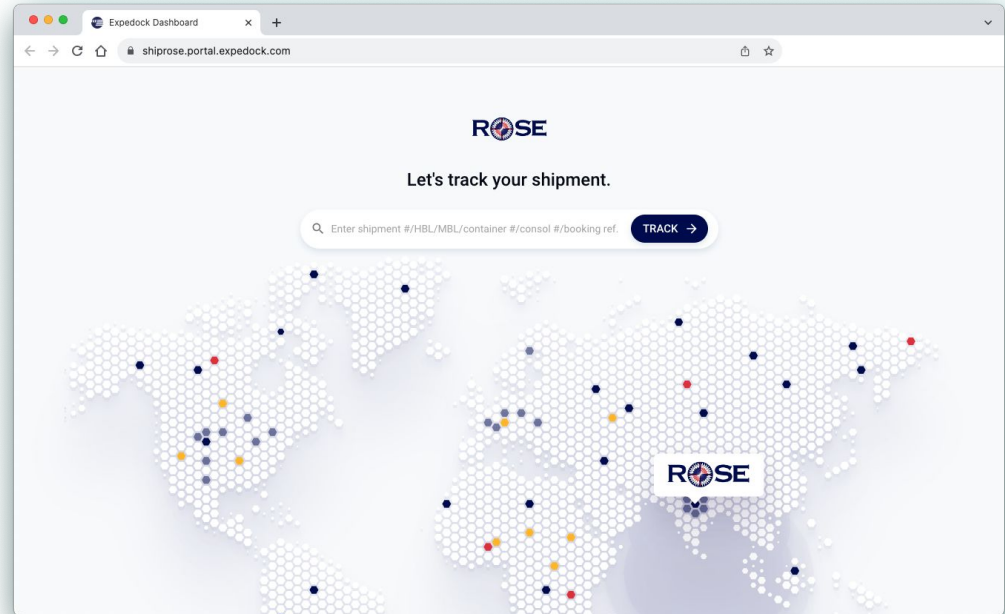


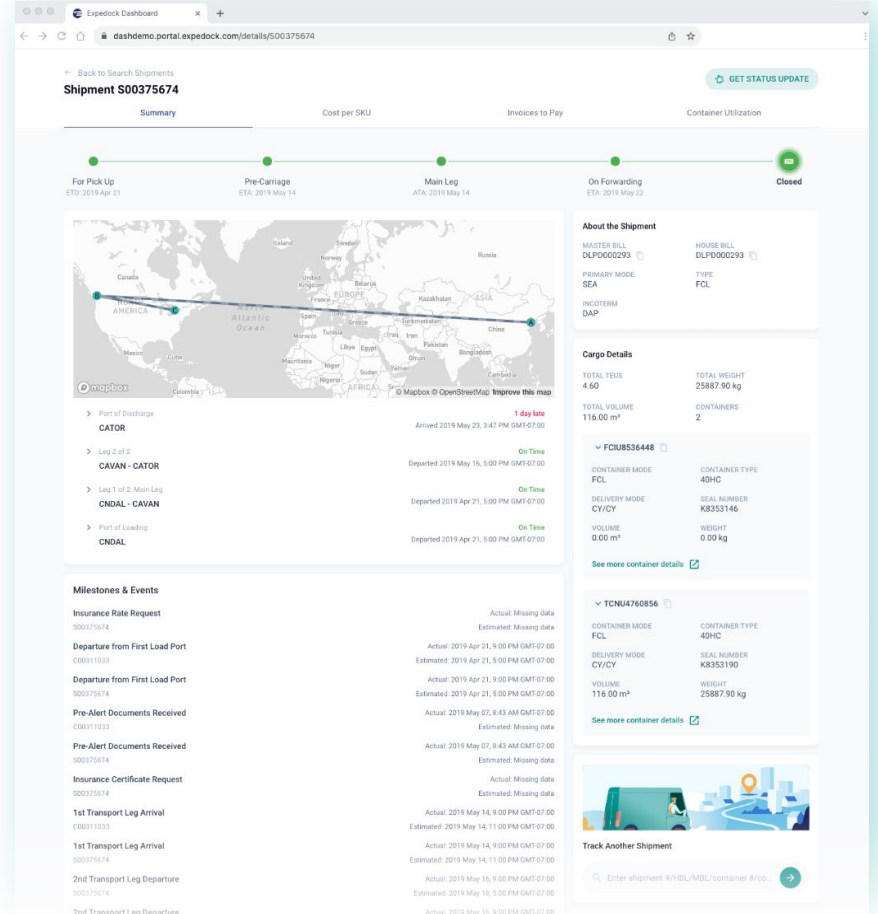
Container Visibility

- **Instant shipment insights** through Rose's customer experience portal - *without* having to remember another login and password.
- **Comprehensive track & trace** by HBL, MBL, Consolidation Number, Shipment Reference, & Booking Reference Number(s).
- **Streamline operations & communication** by spending *less* time and money tracking down important shipment info via call, text, and email.



Container Visibility

- ➔ **View and share key shipment info** including a beautiful map, shipment timeline, milestones, along with your cargo details.
- ➔ **Improve supply chain performance** by monitoring where, when, and how your cargo's getting moved.
- ➔ **Hold your suppliers/vendors accountable** with transparent *Delayed* and *On-Time* notifications.
- ➔ **Improve planning & supply chain efficiency** with access to each shipments' *Cost per SKU*, *Invoices to Pay*, & *Container Utilization*. (COMING SOON)



Total Landed Cost Breakdown per CIV or Shipment

→ **Make informed decisions** about your supply chain with detailed breakdowns of total landed cost on a per SKU & unit level.

← Back to Explore Shipments

SIS230416592 (T29PRD)

ASN: 03345675 Event: NHS New Hou... PO: 112233 PO: 2732 PO: 4587 PO: 8798 PO: 3762

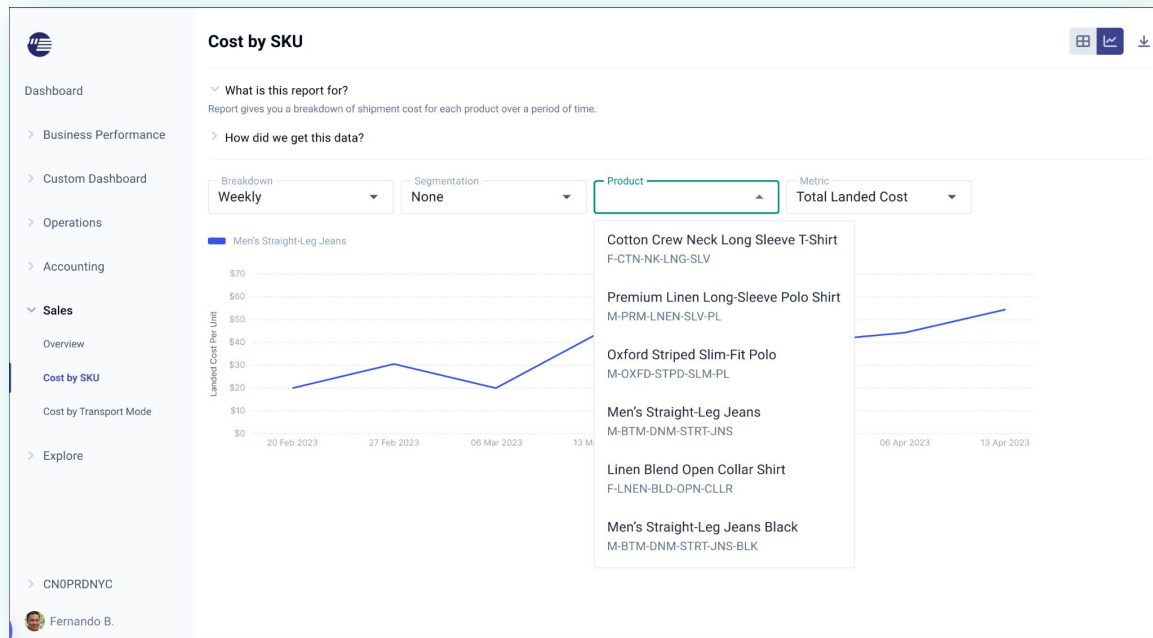
Activity Details Documents Purchase Orders **Products** Quotes Invoices

[EXPORT](#)

| | Purchase Cost | Customs Cost | Freight Cost | Landed Cost |
|-----------------------------------|---------------------|--------------------|-------------------|---------------------|
| Total | \$101,404.22 | \$15,783.33 | \$2,266.66 | \$119,454.21 |
| Cotton Crew Neck Long... | | | | |
| SKU: F-CTN-NK-LNG-SL... | \$4,772.24 total | \$742.79 total | \$472.22 total | \$5,987.26 total |
| PO: 2732 | \$21.21/unit | \$3.30/unit | \$2.10/unit | \$26.61/unit |
| Units: 224 | | | | |
| Premium Linen Long-Sl... | | | | |
| SKU: M-PRM-LNEN-SLV | \$45,121.43 total | \$7,023.05 total | \$472.22 total | \$52,616.70 total |
| PO: 4587 | \$24.67/unit | \$3.84/unit | \$0.26/unit | \$28.77/unit |
| Units: 1829 | | | | |
| Men's Straight-Leg Jea... | | | | |
| SKU: M-BTM-DNM-STRT... | \$17,801.28 total | \$2,770.73 total | \$472.22 total | \$21,044.23 total |
| PO: 8798 | \$26.49/unit | \$4.12/unit | \$0.70/unit | \$31.32/unit |
| Units: 672 | | | | |
| Oxford Striped Slim-Fit... | | | | |
| SKU: M-OXFD-STPD-SL... | \$17,587.50 total | \$2,737.45 total | \$283.33 total | \$20,608.29 total |
| PO: 3762 | \$17.50/unit | \$2.72/unit | \$0.28/unit | \$20.51/unit |
| Units: 672 | | | | |
| Linen Blend Open Collar... | | | | |
| SKU: F-LNEN-OPN-CLLR | \$18,419.31 total | \$4,772.24 total | \$283.33 total | \$24,192.11 total |
| PO: 112233 | \$15.21/unit | \$3.94/unit | \$0.23/unit | \$19.97/unit |
| Units: 1211 | | | | |

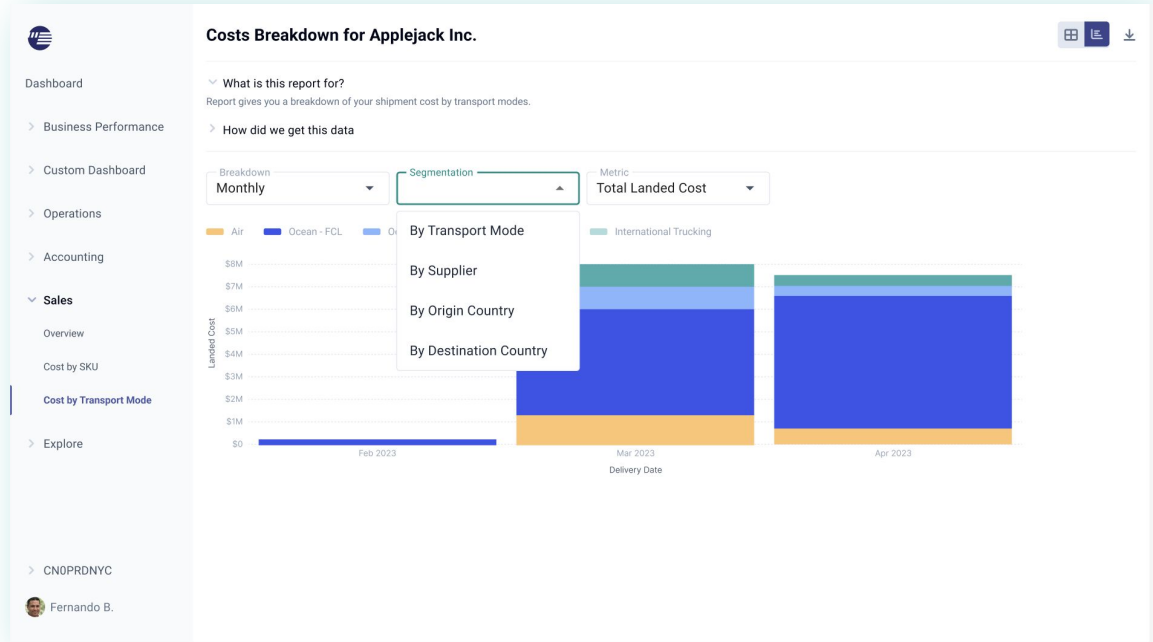
Cost per SKU over time

→ **Understand** the cost structure of your products over a period of time in a dynamically changing supply chain environment.



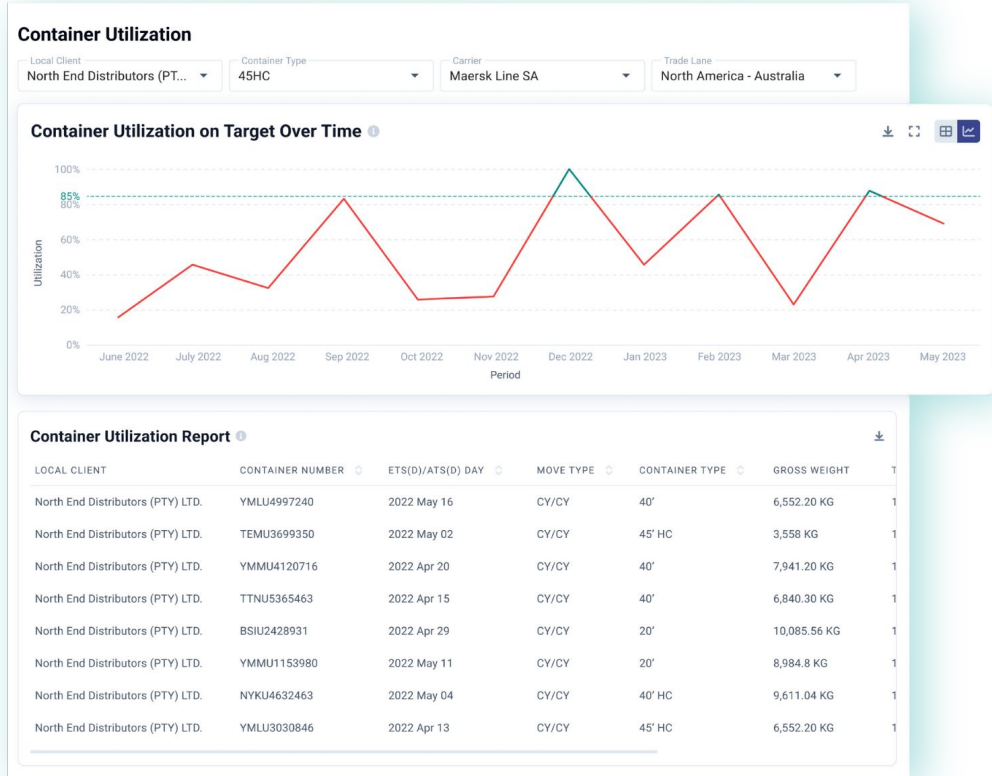
Cost Breakdown

→ **Instantly** break down your costs by different modes (*transport mode, supplier, origin country, and destination country*).



Container Utilization over Time

→ **Obtain insights** to help optimize resource utilization, reduce costs, and drive efficiency - all with targeted utilization KPIs that will differentiate & improve *your* business.



Advanced Utilization Reporting & Insights

- **Gain insight on your business** and where you are leaving money on the table.
- **Improve Origin management** so you can hold your suppliers accountable.
- **Filter & deep dive into trade-level data** for the ultimate client QBRs and insights.

